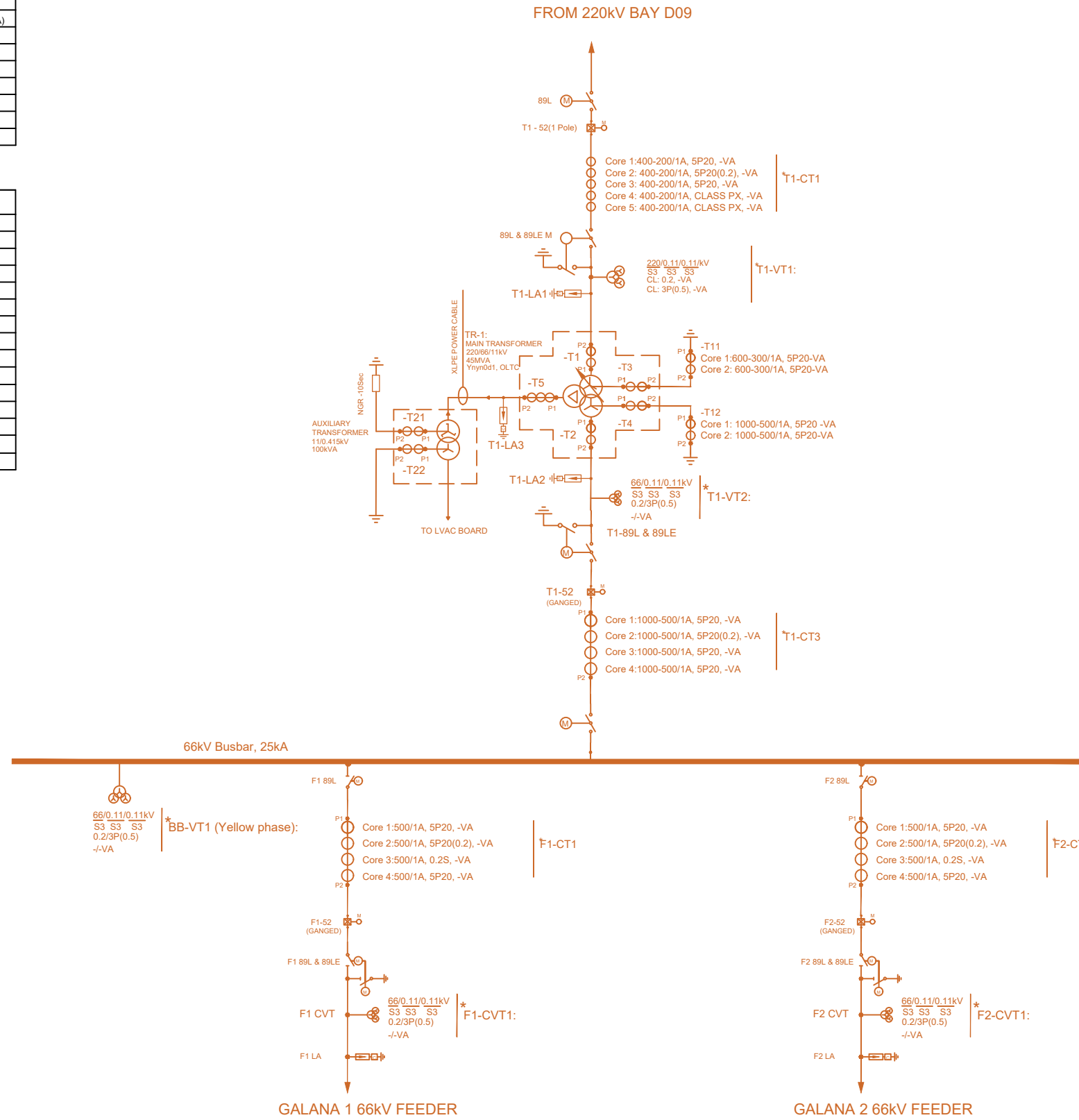


LEGEND:

SL. NO.	SYMBOL	DESCRIPTION
01		LIGHTNING ARRESTOR WITH SURGE COUNTER (LA)
02		CAPACITIVE VOLTAGE TRANSFORMER (CVT)
03		ELECTRICAL OPERATED ISOLATOR WITHOUT E/S
04		ELECTRICAL OPERATED ISOLATOR WITH 1 E/S
05		EARTHING SWITCH MOTOR OPERATED
06		AIR CIRCUIT BREAKER
07		CURRENT TRANSFORMER
08		SF6 CIRCUIT BREAKER (CB)

CT	CORES	RATIO, CLASS
T1	CORE 1	400-200/1A, CLASS 5P20
	CORE 2	400-200/1A, CLASS 5P20
T2	CORE 1	1000-500/1A, CLASS 5P20
	CORE 2	1000-500/1A, CLASS 5P20
T3	CORE 1	600-300/1A, CLASS 5P20
	CORE 2	600-300/1A, CLASS PX
T4	CORE 1	1000-500/1A, CLASS 5P20
	CORE 2	1000-500/1A, CLASS PX
T5	CORE 1	500/1A, CLASS PX
	CORE 2	500/1A, CLASS 5P20
	CORE 3	500/1A, CLASS 5P20
T21	CORE 1	500/1A, CLASS 5P20
	CORE 2	500/1A, CLASS PX
T22	CORE 1	500/1A, CLASS 5P20
	CORE 2	500/1A, CLASS 5P20

- NOTES
- THIS DRAWING IS FOR BIDDING PURPOSES ONLY
 - FINAL EQUIPMENT NOMENCLATURE WILL BE PROVIDED AT A LATER STAGE
 - THE BURDEN OF CTs AND CVT/VTs SHALL BE FINALIZED DURING DETAILED DESIGN BY THE EPC CONTRACTOR SUBJECT TO APPROVAL BY THE CLIENT REPRESENTATIVE
 - THE MAIN AND AUXILIARY TRANSFORMERS SHALL HAVE BUSHING CTs AS PER THE SLD.



CONSULTANT/CONTRACTOR:

DESIGNED BY: TSP
 CHECKED BY: HS
 APPROVED BY: AMM
 PRESENTED BY: TSP

TSP

REVISION DESCRIPTION	
N°	DATE

PROJECT
 220/66 kV BAY EXTENSION AT WERU SUBSTATION SLD

SCALE
 NOT TO SCALE

UNITS:	--
DATE:	12/05/2023
DRAWING NO:	XX/XXX/XXX
SHEET NO:	000